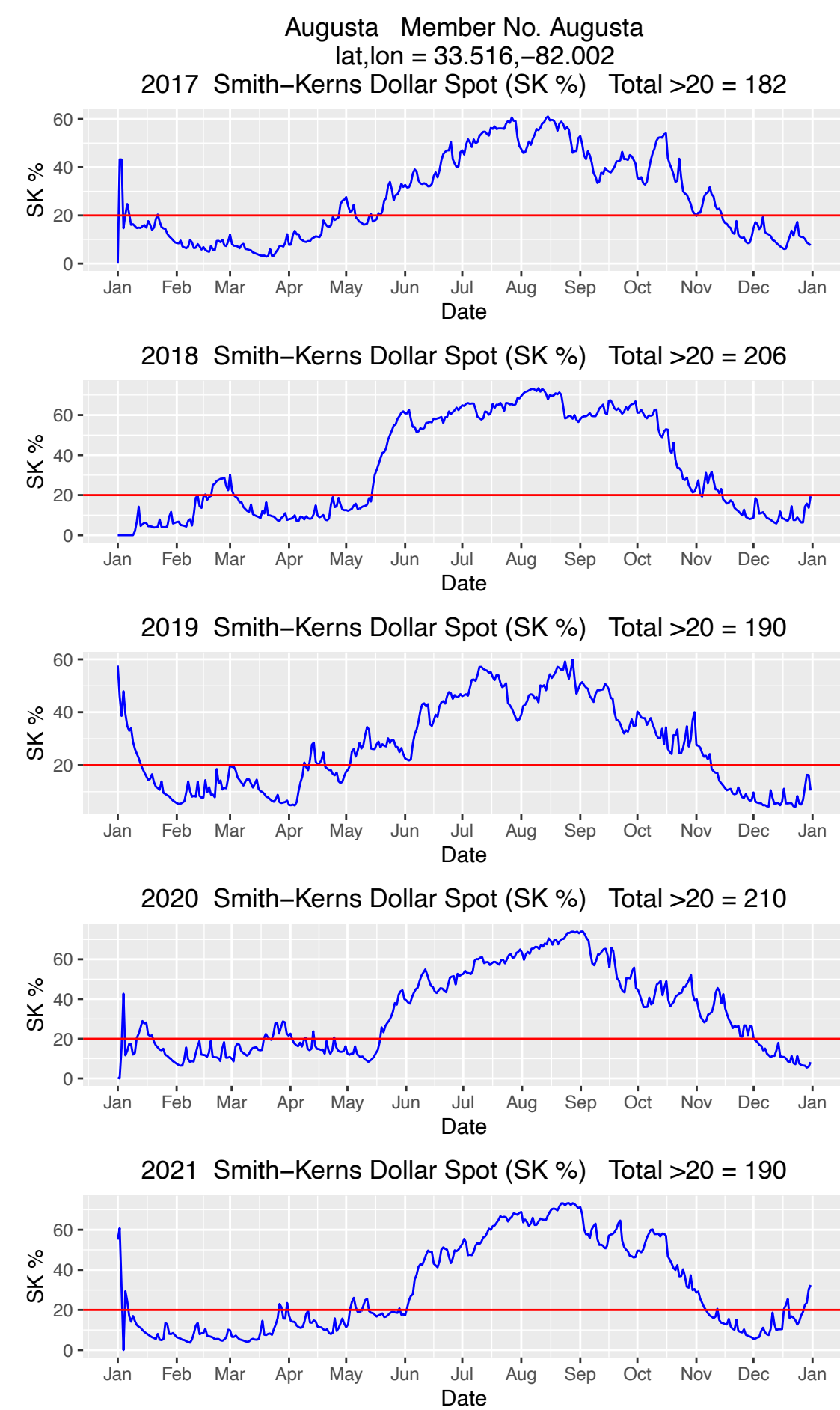
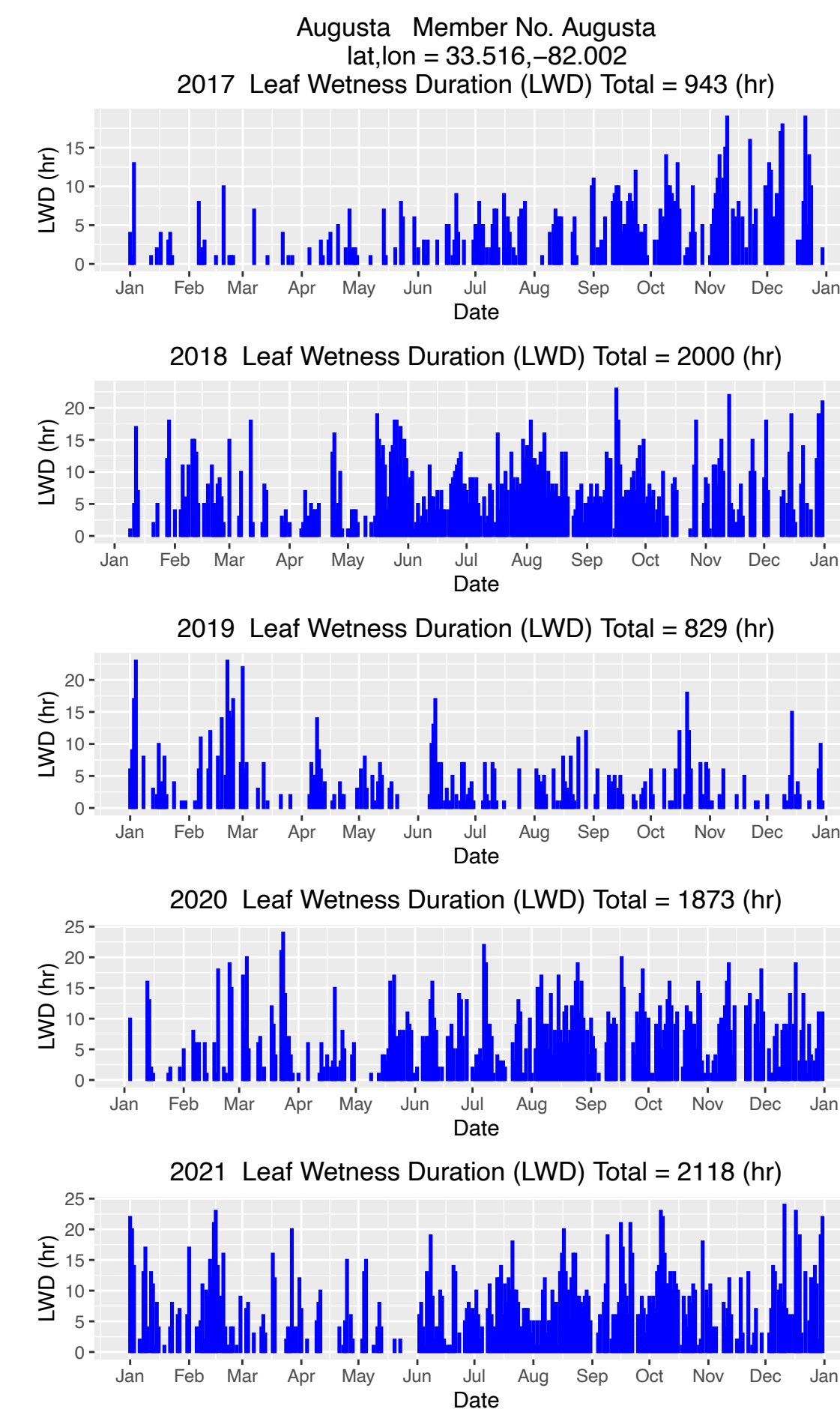
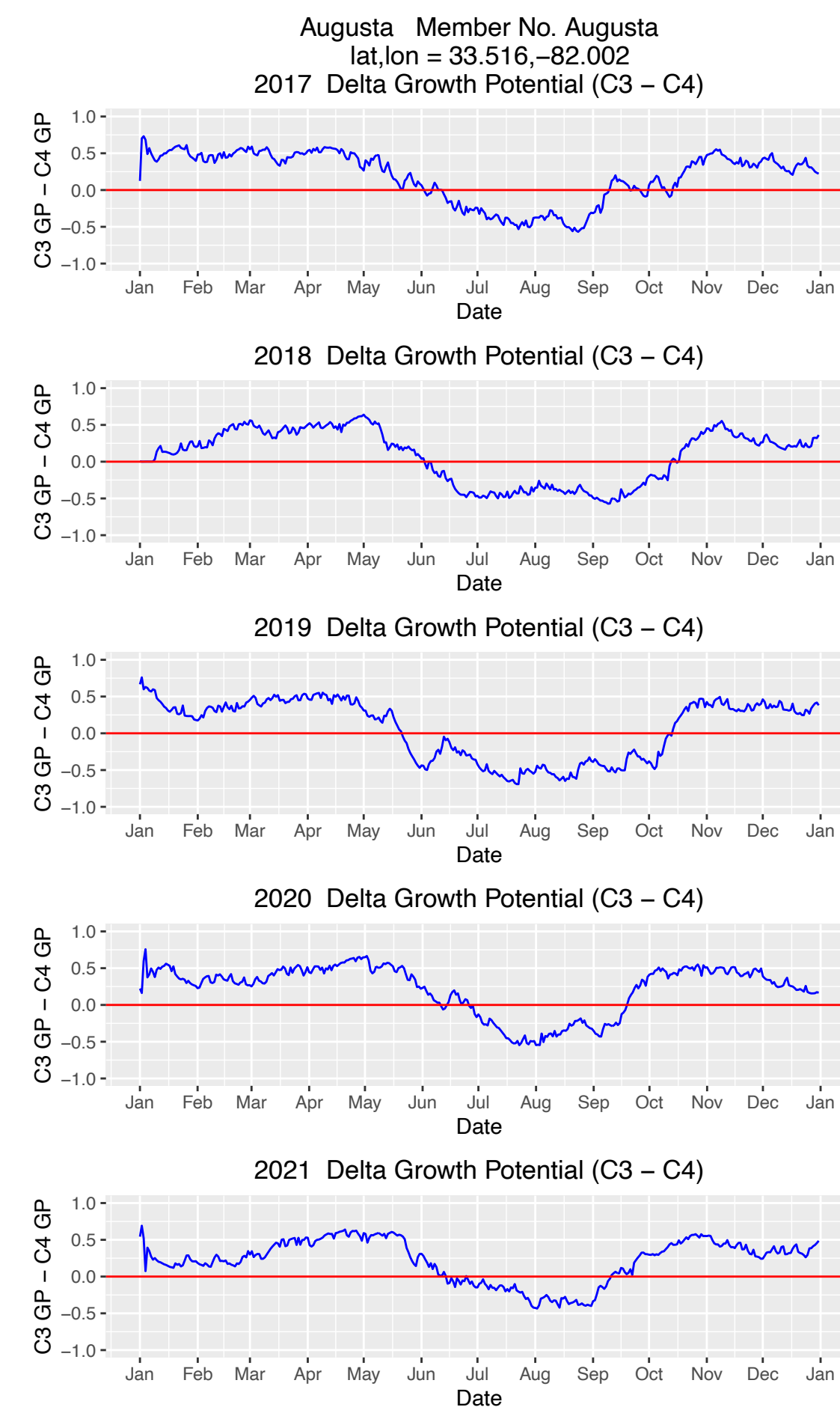
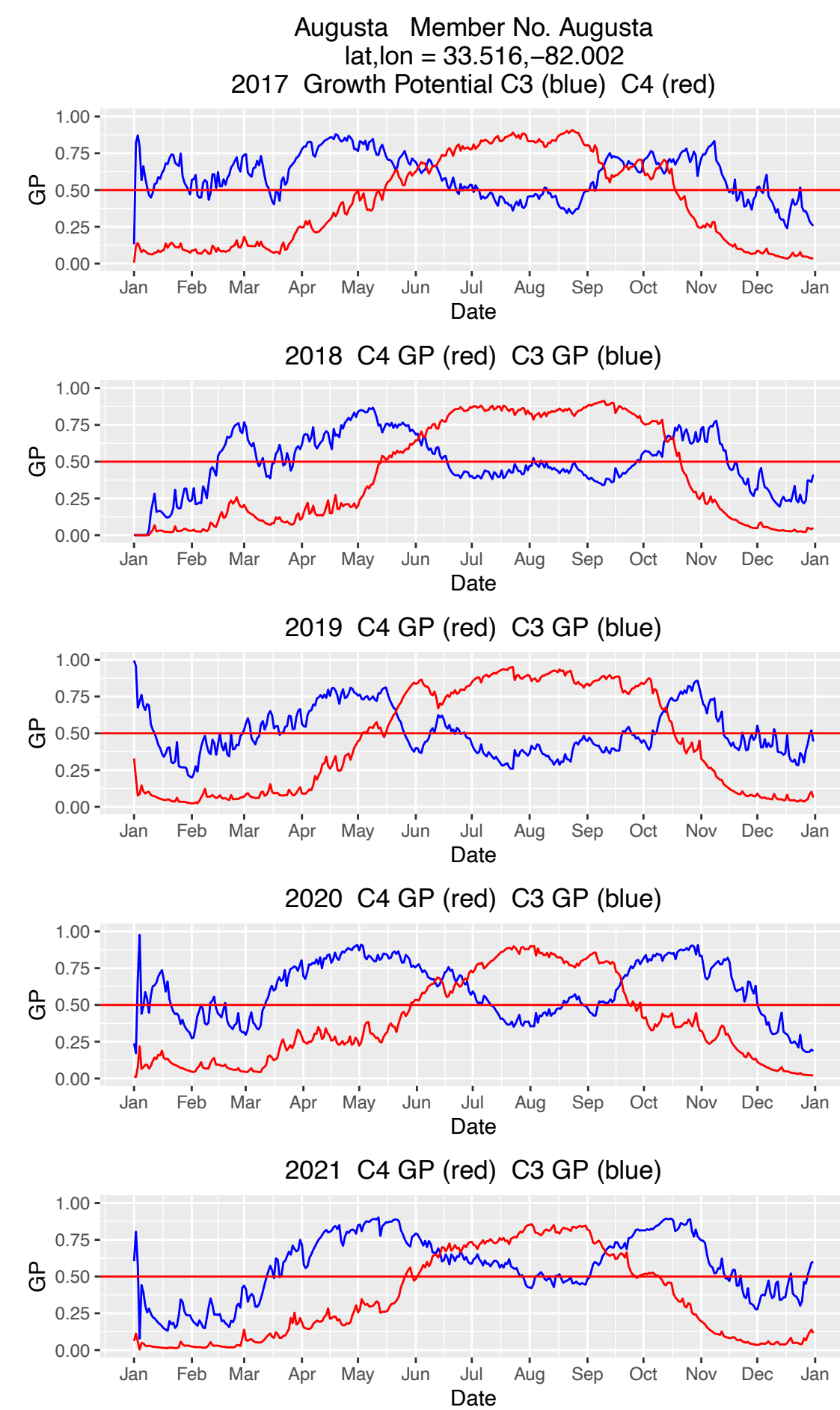


US Units C3 Cool Season Turfgrass Nutrient Management Plan
Augusta Member No. Augusta
lat,lon = 33.516,-82.002
GP refers to Growth Potential based upon five-year average temperature
Rate of fertilizer application is lb/1000 sq ft

Month	JAN	FEB	MAR	APR	MAY	JUN	JUL	AUG	SEP	OCT	NOV	DEC
GP	0.19	0.44	0.68	0.98	0.83	0.55	0.39	0.45	0.66	1.00	0.44	0.25
N	0.1	0.3	0.5	0.7	0.6	0.4	0.3	0.3	0.5	0.7	0.3	0.2
K	0.1	0.2	0.2	0.4	0.3	0.2	0.1	0.2	0.2	0.4	0.2	0.1
P	0.0	0.0	0.1	0.1	0.1	0.0	0.0	0.0	0.1	0.1	0.0	0.0
Ca	0.0	0.0	0.0	0.1	0.1	0.0	0.0	0.0	0.0	0.1	0.0	0.0
Mg	0.01	0.02	0.03	0.04	0.04	0.02	0.02	0.02	0.03	0.04	0.02	0.01
S	0.01	0.02	0.04	0.05	0.04	0.03	0.02	0.02	0.04	0.05	0.02	0.01
Fe	0.001	0.002	0.002	0.004	0.003	0.002	0.001	0.002	0.002	0.004	0.002	0.001
Mn	0.000	0.001	0.001	0.001	0.001	0.001	0.001	0.001	0.001	0.001	0.001	0.000

	lb/1000 sq ft	Soil ppm	MLSN ppm
N	4.9	NA	NA
K	2.5	80	37
P	0.6	20	21
Ca	0.5	16	331
Mg	0.3	10	47
S	0.4	12	7
Fe	0	0.8	90
Mn	0	0.3	30



US Units C4 Warm Season Turfgrass Nutrient Management Plan
Augusta Member No. Augusta
lat,lon = 33.516,-82.002
GP refers to Growth Potential based upon five-year average temperature
Rate of fertilizer application is lb/1000 sq ft

Month	JAN	FEB	MAR	APR	MAY	JUN	JUL	AUG	SEP	OCT	NOV	DEC
GP	0.01	0.04	0.08	0.22	0.55	0.78	0.88	0.85	0.69	0.32	0.04	0.02
N	0.0	0.0	0.1	0.2	0.4	0.6	0.6	0.6	0.5	0.2	0.0	0.0
K	0.0	0.0	0.0	0.1	0.2	0.3	0.3	0.3	0.2	0.1	0.0	0.0
P	0.0	0.0	0.0	0.0	0.0	0.1	0.1	0.1	0.1	0.0	0.0	0.0
Ca	0.0	0.0	0.0	0.0	0.0	0.1	0.1	0.1	0.0	0.0	0.0	0.0
Mg	0.00	0.00	0.00	0.01	0.02	0.03	0.04	0.04	0.03	0.01	0.00	0.00
S	0.00	0.00	0.00	0.01	0.03	0.04	0.05	0.05	0.04	0.02	0.00	0.00
Fe	0.000	0.000	0.000	0.001	0.002	0.003	0.003	0.003	0.002	0.001	0.000	0.000
Mn	0.000	0.000	0.000	0.000	0.001	0.001	0.001	0.001	0.001	0.000	0.000	0.000

	lb/1000 sq ft	Soil ppm	MLSN ppm
N	3.2	NA	NA
K	1.6	52	37
P	0.4	13	21
Ca	0.3	10	331
Mg	0.2	7	47
S	0.2	8	7
Fe	0	0.5	90
Mn	0	0.2	30